



**M&O Perry Industries**

## LOWER SPEED LIQUID FILLING MACHINES



***M&O Perry Industries reliable low to medium speed Liquid Filling Systems provide high accuracy fills 0.2% < 0.5% depending on container stability, liquid, and handling characteristics.***

- Model P1500 series to liquid fill, stopper, plug, aluminum crimp cap or screw cap
- Compact flexible design to process *glass or plastic vials, ophthalmic bottles, and tubes*
- Intermittent motion with output from 50cpm to 90cpm
- Container sizes up to 250ml
- Linear conveyance system with “V” shaped tooling blocks to accommodate range of vials without change parts
- Optional infeed and outfeed designs with turntables and tray loading
- Choice of accurate pump systems
  - ✓ Peristaltic
  - ✓ Piston
  - ✓ Rolling diaphragm
- IPC Checkweigh modules available
- VLAF, RABS, Isolation Hoods.
- Ideal for clinical and batch production

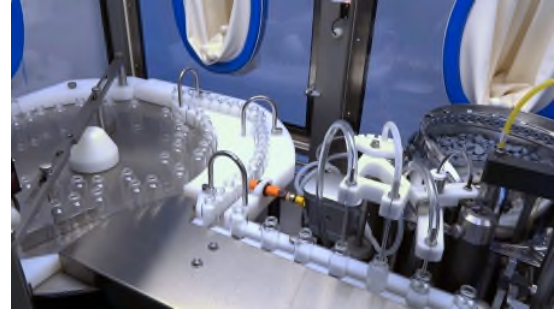
MOP P1500S 0122



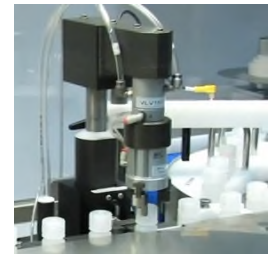
**AWS BIO-PHARMA TECHNOLOGIES**

[WWW.AWSBIOPHARMA.COM](http://WWW.AWSBIOPHARMA.COM) 1.877.297.7763 [SALES@AWSBIOPHARMA.COM](mailto:SALES@AWSBIOPHARMA.COM)

GLASS VIAL  
LIQUID FILLING  
STOPPER INSERT  
ALUMINUM  
CRIMP CAP

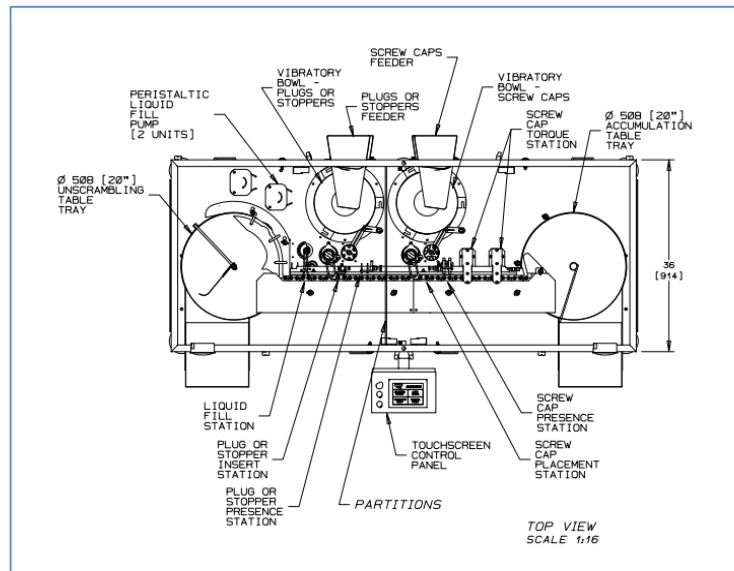


PLASTIC BOTTLE  
LIQUID FILLING  
SCREW CAP  
PLACEMENT  
TORQUE  
STATION



### OPHTHALMIC BOTTLE FILLING, DROPPER INSERT, SCREW CAP, DUAL TOOLED LAYOUT

- Constructed on a sturdy tubular 304 stainless steel frame with tabletop manufactured from stainless steel.
- Side panels are constructed from stainless steel and feature easy-in/easy-out design.
- Tooling blocks are constructed from Delrin or UHMWPE and mounted to a steel reinforced timing belt.
- HMI allows for easy adjustment and maintaining of machine functions.
- Machine is supplied with a PLC that monitors and controls all machine functions.
- Stepper/Servo motors for placements and insertions.



MOP P1500S0122



**AWS BIO-PHARMA TECHNOLOGIES**

[WWW.AWSBIOPHARMA.COM](http://WWW.AWSBIOPHARMA.COM) 1.877.297.7763 [SALES@AWSBIOPHARMA.COM](mailto:SALES@AWSBIOPHARMA.COM)