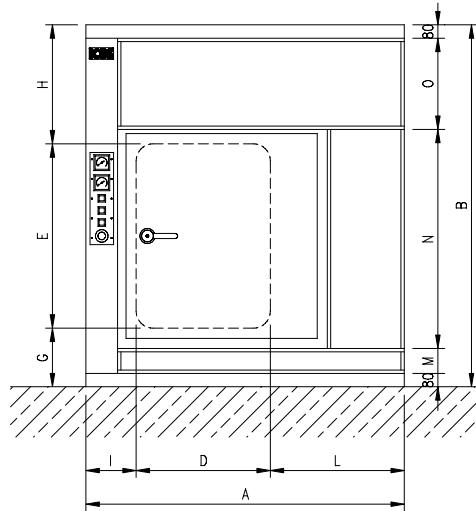
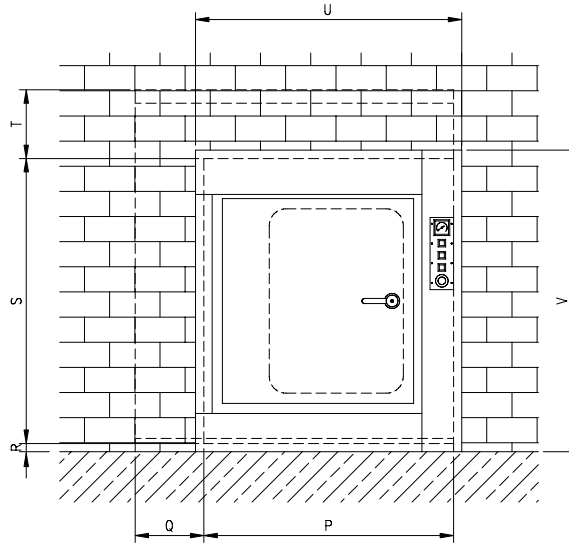


VISTA FRONTALE – LATO CARICO
FRONTAL VIEW – LOADING SIDE

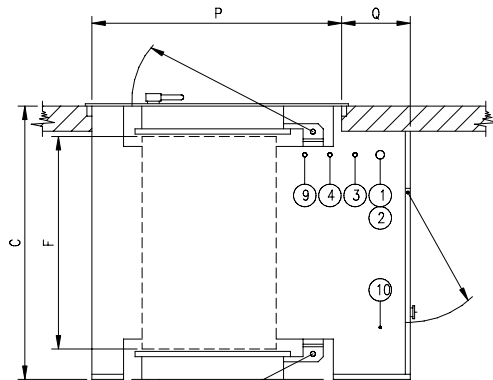


VISTA FRONTALE – LATO SCARICO
FRONTAL VIEW – UNLOADING SIDE



VISTA DALL'ALTO
TOP VIEW

LATO PRELIEVO
UNLOADING SIDE



LATO CARICO
LOADING SIDE

Proudly Represented by:
AWS Bio-Pharma Technologies, LLC
www.AWSBioPharma.com
(505) 286-3944



L	800	V	1800
I	300	U	1590
H	710	T	410
G	350	S	1700
F	1250	R	50
E	1100	Q	410
D	800	P	1490
C	1830	O	544
B	2160	N	1307
A	1900	M	149
POS.	DIMENS.	POS.	DIMENS.

DATI TECNICI – TECHNICAL DATA

DISPERSIONE TERMICA A REGIME – HEAT LOAD DURING PROCESS

VANO TECNICO: TECHNICAL ROOM:	2 kW 114 BTU/min.
LATO CARICO: LOADING SIDE:	0,75 kW 42,75 BTU/min.
LATO SCARICO: UNLOADING SIDE:	0,75 kW 42,75 BTU/min.

DIMENSIONI E PESO IMBALLATO: PACKING DIMENSIONS AND WEIGHT:	MACCHINA MONTATA (No.1 CASSA) (3400x2100xH2500) MANTLED MACHINE (NR.1 CASE) (134"x83"xH99")	(650 kg) (1433 lb)
--	--	-----------------------

DIMENSIONI QUADRO DI CONTROLLO: CONTROL BOARD DIMENSION:	800 x 500 x H2100 (31,5" x 19,7" x H82,7")
---	---

PESO A PIENO CARICO: LOADED MACHINE:	3000 kg 6614 lb
---	--------------------

PESO A MACCHINA VUOTA: EMPTY MACHINE:	2900 kg 6393 lb
--	--------------------

POTENZA TOTALE INSTALLATA: MAIN POWER:	6 kW
---	------

11						
10	ARIA COMPRESSA COMPRESSED AIR	DN6 1/4"	6bar 87psig	20nit/1' 0,7cfm	/	200nit 7cf
9	ACQUA ADDOLCITA FREDDA SOFTENED COLD WATER	DN25 1"	3bar 43,5psig	20lit/1' 5,28gpm	10°C 50°F	200lit 52,8gal
8						
7						
6						
5						
4	VAPORE PULITO SATURATED CLEAN STEAM	DN25 1"	2,5bar 36,3psig	80kg/h 176lb/h	/	60kg 132lb
3	VAPORE INDUSTRIALE INDUSTRIAL STEAM	DN20 3/4"	2,5bar 36,3psig	50kg/h 110lb/h	/	25kg 55lb
2	SFIATO ATMOSFERICO EXHAUST DISCHARGE	DN50 2"	/	/	120°C 248°F	/
1	SCARICO GENERALE GENERAL DISCHARGE	DN50 2"	/	20lit/1' 5,28gpm	120°C 248°F	/

POS.	DENOMINAZIONE DESCRIPTION	DIAM. DIA.	PRESS. PRESS.	PORTATA FLOW	TEMP. TEMP.	CONS./CICLO CONS./CYCLE
------	------------------------------	---------------	------------------	-----------------	----------------	----------------------------

ICOS IMPIANTI	DENOMINAZIONE DESCRIPTION	CODICE DISEGNO DRAWING CODE 0027-00
	SCHEDA TECNICA "AV/L 811/A" "AV/L 811/A" DATA SHEET	DATA DATE 22.02.2000

RIF-REF.	MODIFICHE – MODIFICATIONS	DATA-DATE	SCALA SCALE
----------	---------------------------	-----------	-------------

0 4			DISEGNATO DA DRAWING BY CM
0 3			CONTROLLATO DA CHECKED BY CL
0 2			
0 1	EMESSO PER APPROVAZIONE – FOR APPROVAL	22.02.00	APPROVATO DA APPROVED BY CL

Il presente disegno è di nostra proprietà. E' vietato a chiunque di riprodurlo o renderlo noto a terzi senza nostra autorizzazione. The drawing remains the property of ICOS. Without our authorisation it is strictly forbidden to copy it, or its contents known to others.